

## Access to Kyoto Kyotamba



### Cars

Travelling by a rental car maybe the easiest way to getting to/around this out-of-the-way Kyoto Kyotamba area. To/from Kyoto city, Kutsukake IC of the Kyoto Jukan Expressway is where you'd want to use the toll road, off at Tamba, Mizuho and/or Wachi IC.

### Trains

JR (Japan Rail) servicing this area, there are San'in Main Line which can also be called as Sagano Line, you can travel between Kyoto and Sonobe Sta. in about 40 mins.

### To/From Airport

The most convenient option from KIX (Kansai International Airport) is the JR Limited Express "Haruka" 75min to Kyoto Sta., OR using the Airport limousine between KIX and Kyoto 88 min. Changing at Kyoto, it is another 40 min by train or 70 min by car. ITM (Osaka International Airport) 50 min by Airport limousine is also accessible.

## Information

Kyotamba Town Municipal Department Tourism of Kyotamba

[www.town.kyotamba.kyoto.jp](http://www.town.kyotamba.kyoto.jp)

62-6 Yatsutani Komono Kyotamba Town Funaigun Kyoto 622-0292

TEL.0771-82-3809 FAX.0771-82-2500

Connect with Kyotamba Town

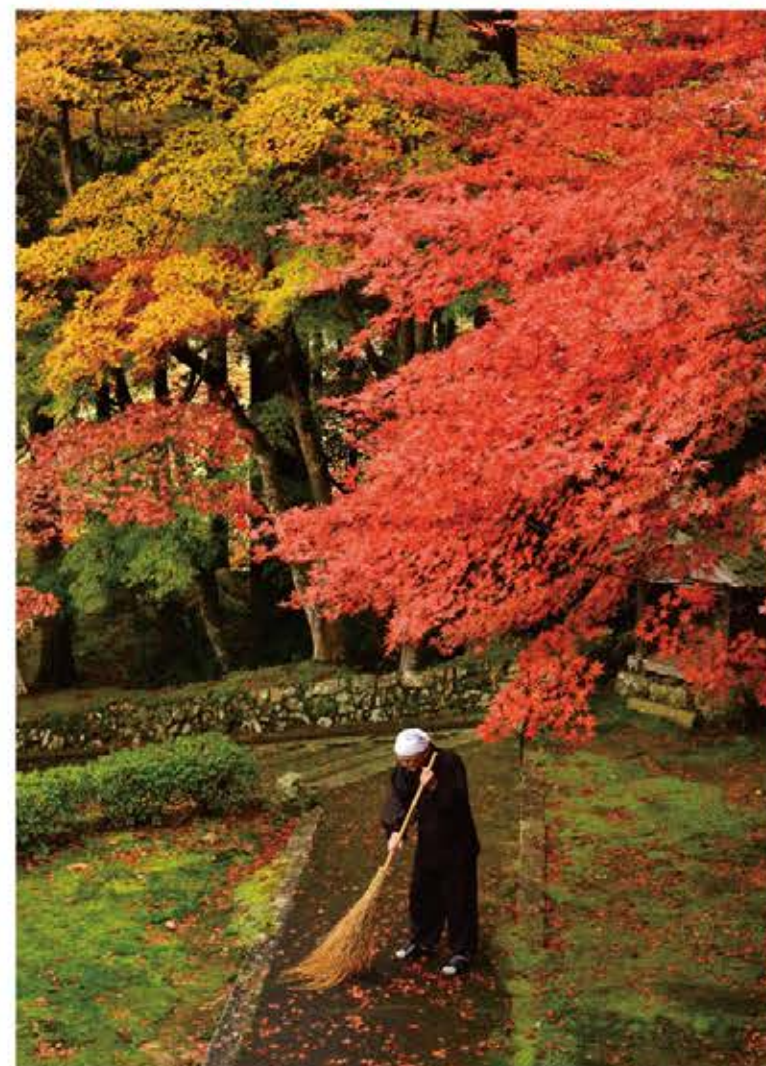
[facebook](#) @kyotambaaajim [twitter](#) @ajim\_kyotamba

## KYOTO KYOTAMBA

# TOURIST GUIDE BOOK

Blessing of the Forest

Welcome to Kyotamba, a mother land of Japanese traditions and modern culture!





# Kyotamba

## Inside This Guide

Consisting of Tamba, Mizuho, and Wachi area, this countryside region is called "Kyoto Kyotamba". Surrounded by the mountains that changes its appearance every season, pure clean water of the rivers, with its harmonious combination of history, culture and nature, Kyotamba will provide you with a great healing and enrichment. Kyotamba's wide varieties of agricultural products are also to offer.

## About Kyotamba

About an hour drive from Kansai region (Kyoto, Osaka, Kobe) the town is situated in the convenient location, and it's in the heart of the three major Routes connecting the North and South of Kyoto including Kyoto Jukan Express Highway and JR San'in Honsen.

Kyotamba produces agricultural crops by efficiently utilising its natural climate and features of the region Tamba plateau. It is also one of the most recognised dairy farming area in Kyoto Prefecture.

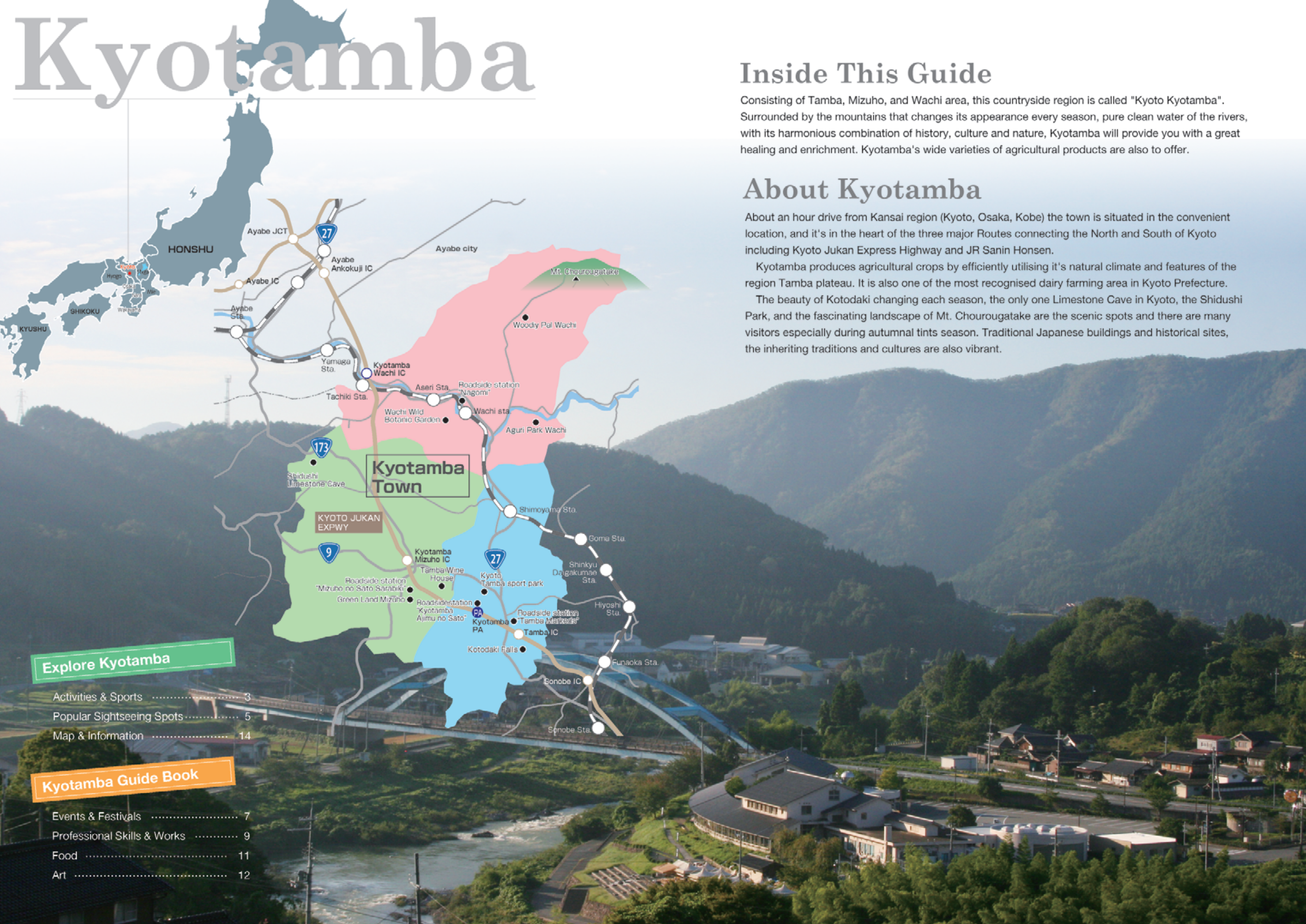
The beauty of Kotodaki changing each season, the only one Limestone Cave in Kyoto, the Shidushi Park, and the fascinating landscape of Mt. Chourougatake are the scenic spots and there are many visitors especially during autumnal tints season. Traditional Japanese buildings and historical sites, the inheriting traditions and cultures are also vibrant.

### Explore Kyotamba

Activities & Sports .....	3
Popular Sightseeing Spots .....	5
Map & Information .....	14

### Kyotamba Guide Book

Events & Festivals .....	7
Professional Skills & Works .....	9
Food .....	11
Art .....	12





## Activities & Sports

Kyotamba being the land of the spiritual home town, synchronising with our five senses, this area will fulfill your heart and body for anyone from young to old.

### Kyoto Tamba highlands national park

It spreads extensively over the central Kyoto, Kyoto city, Ayabe city, Nantan city, Kyotamba town in Tamba Highlands. Rare animals live in this primeval forest.



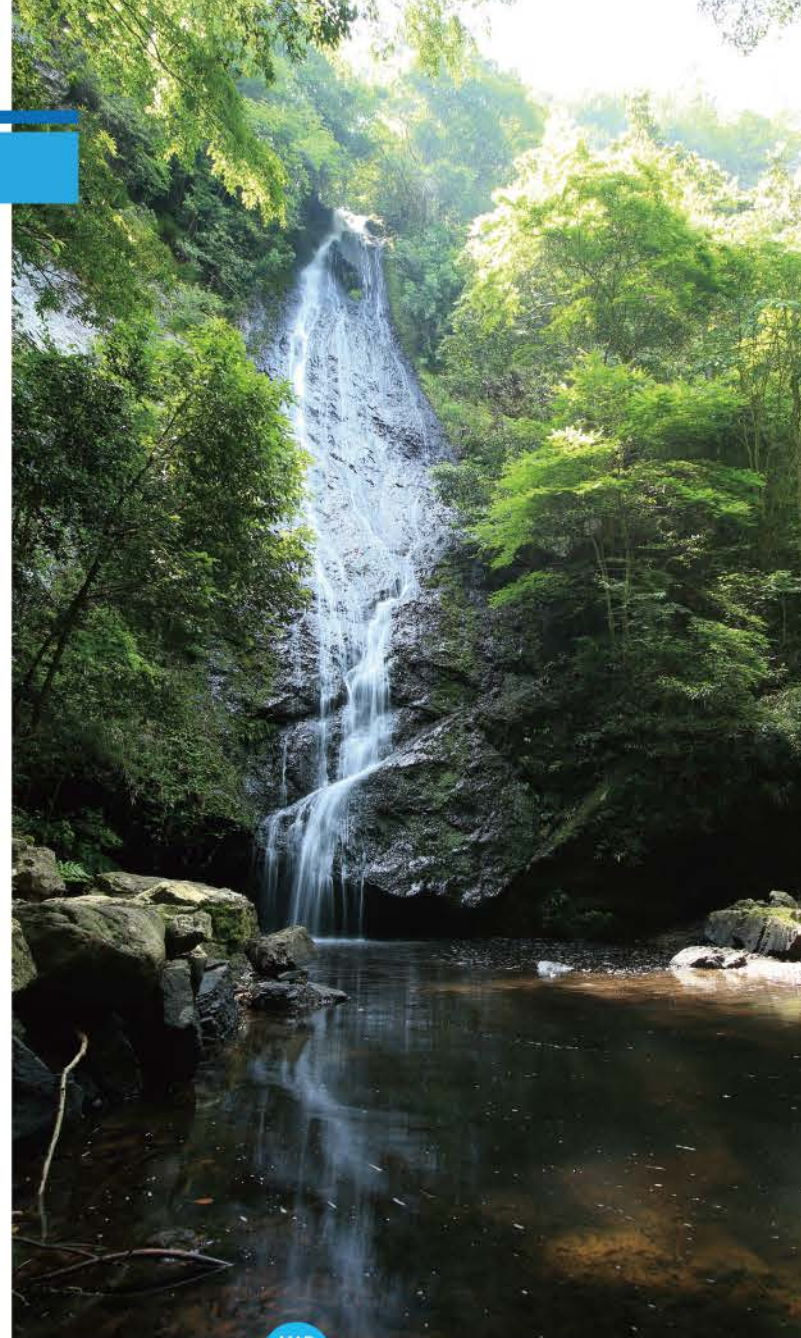
MAP  
A-1

### Mt. Chourougatake

The view from the top of the 916.9m mountain is absolutely stunning. From its highest elevation, clear blue sky, sea of clouds, and sun set are showing you a magnificent scenery. On a clear day, you can see the Japanese ocean.

At the entrance of the trekking course, you will come across the designated cultural property of the town, the seven coloured tree.

ADD/Hodosu Kyotamba Town



MAP  
C-5

### Kotodaki Falls'

Kotodaki Falls' run down the rock that is 43m high, and is one of the major tourist attraction of this town.

ADD/Ichimori Kyotamba Town



MAP  
C-5

### Kyoto Tamba Sport Park

This park includes various sports facilities, you can relax and enjoy children's area, giant slide, aquatic centers, an astronomical observatory, patter golf, and multiple facilities.

ADD/110-7 Sone-kuzure-shimodai Kyotamba Town  
<http://kyoto-tanbapark.or.jp/>



MAP  
C-5

### Kyoto Training Centre

Adjacent to the Sport park, the training Centre holds one of the top sport facilities for physical trainings specially assisting junior athletes.

ADD/110-7 Sone-kuzure-shimodai Kyotamba Town

### Wachi Wild Botanic Garden

MAP  
C-3

This 12-ha. Garden, utilises the natural surroundings, holding 900 varieties of plants, herbs and fruit trees. A wide variety of events are held throughout the year, visitors can experience hand crafting insects made from twigs and bark of trees.

TIME/9am-5pm

ADD/5Shiyogaki Sakahara Kyotamba Town 629-1131

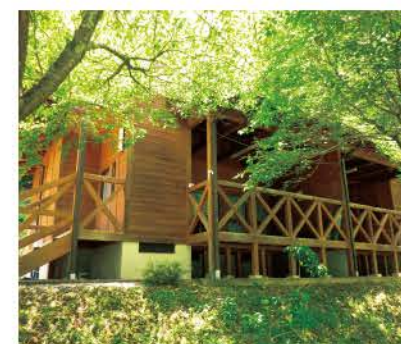


### Woody Pal Wachi

MAP  
C-2

This accommodation offers both Cottage and Camping ground. The venue has been used by a wide range of people, and it varies from the visitors to Chourougatake to families and groups.

ADD/35 Mukaiyama Shimoawano Kyotamba Town 629-1105



MAP  
C-3

### Cycling

Feel like hiring a bike today? Cycling not only help to ease your stress it's a great energy boost while you gain a whole new perception of the country life! Rental bikes are available at Roadside station"Nagomi".

TIME/8:30am-6pm

ADD/11 Sakabara-kamimojiri Kyotamba Town



MAP  
C-3

### Canoe Course

This course on Yura River has been selected by the National Sports Council as an official Canoe Course, it can host from beginners to advanced. You can enjoy the best excitement of canoeing.

TIME/9am-5pm (Nov-Mar closed)

ADD/20 Shiyogaki Sakabara Kyotamba Town



MAP  
B-5

### Greenland Mizuho

This sport facility is located in the beautiful nature. Visitors come from Keihanshin (Kobe Osaka) area. Ground Golf can be enjoyed all year around.

ADD/1-4 Sarabiki Oboso Kyotamba Town 622-0322

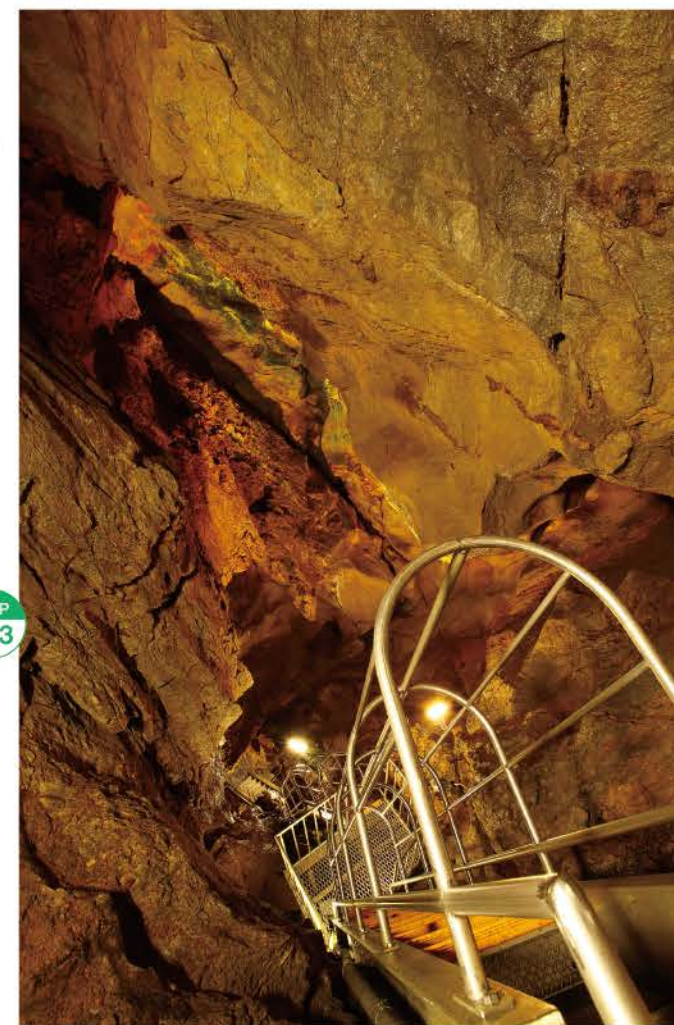
### Hodosu Amago no Sato

MAP  
D-1

Enjoy the Atago fishing, BBQ and dipping in the river. Popular spot for families throughout Spring and Summer.

ADD/26 Donotani

Hodosu Kyotamba Town



MAP  
A-3

### Shidushi Limestone Cave Park

Must see the only one Limestone Cave in Kyoto, the Shidushi Limestone Cave Park! Climbing down the stairs almost vertical down to 25m deep in the cave, the light and cool air creates a mystic atmosphere. In surrounding areas, there are outdoor cottages, camping and fishing areas.

TIME/9am-5pm

ADD/12-1 Okuzure Shidushi Kyotamba Town 622-0315



MAP  
C-5

### Shiotani Kofun Park

This ancient tomb is estimated to be built continuously back in the 5-6 century, consisting of 12 tombs holding the 5th tomb in the center. Miko Haniwa is a designated Cultural Intangible of the Prefecture.

ADD/65-1 Sone-fukashino Kyotamba Town



## Popular Sightseeing Spot

Take a moment to explore the traditional culture and products, seeing one of the most fortunate temples in the area.



### "Mizuho no Sato Sarabiki" Roadside Station

Adjacent to Green Land Mizuho is route 173 and offers a variety of fresh local produce, ceramic products by local potter are displayed and sold every day.

TIME/9am-6pm

ADD/10-1 Oboso-yasumiishi Kyotamba Town



### Old Shitsumi Elementary School

Established in 1960, there are seven stores, including Ehon-chan (picture book store) and a stone baking pizza restaurant in this authentic wooden building.

ADD/43 Ueno Shitsumi Kyotamba Town



### Roadside Station "Nagomi"

Along the side of the route 27, Nagomi overlooks to Yura River, selling local produce, fresh vegetables, and wild vegetables.

TIME/8:30am-6pm

ADD/11 Sakabara-kamimojiri Kyotamba Town



### Roadside Station "Kyotamba Ajimu no Sato"

Adjacent to Tamba Parking Area on the Kyoto Jukan Expressway, this roadside station includes a restaurant, food court serving food prepared with local ingredients, some kids menus which are designed by local school children.

TIME/9am-9pm

ADD/65-1 Sone-fukashino Kyotamba Town



### Roadside Station "Tamba Markeds"

About 500m to the North on route 9 from Kyoto Jukan Expressway Tamba IC, this mall offers various restaurants, and shopping sights. Adjacent to it, at Uruoikan, freshly picked vegetables are available on Tuesday, Thursday, Saturday and Sunday.

TIME/9am-8pm ADD/3-5 Shuchi-shikishiden Kyotamba Town



### Kute Shrine

It is said that Sadauji Fujiwara had built the shrine and originates to Matsuo Taisha (Grand Shrine). The main building was renovated in 1498, followed by a number of reconstructions before it settled back to its original appearance. It is designated as the cultural inheritance of Japan.

ADD/125 Kute Toyota Kyotamba Town 622-0231



### Chogenji Temple

The eldest son of Emperor Montoku (the 55th emperor of Japan), Koretaka, became a priest after losing the opportunity of being in the line of succession to the imperial throne and established the temple in 874. The temple is known as a cancer prevention. Attracting over 1,000 visitors, it holds the Kannon festival on the first Sunday of July each year.

ADD/25 Okanoshita Ideno Kyotamba Town 629-1143



### Old folk house of the Watanabe Family

Though not accurate, this building seems to be constructed in the 16th century. The building being the oldest in Northern Kyoto, was appointed in 1975 as the historical inheritance of Japan.

ADD/17 Iwanoue Shimoyama Kyotamba Town 622-0201



### Shounji Tensokudo Temple

This temple was established by a Tensoku Kozen monk. He was known as a divine power, healer and a good communicator to the people by paying attention to their troubles. Tensokudo temple is known as a senility prevention temple.

ADD/36 Kaminoyama Osako Kyotamba Town 629-1111



### Daifukukoji Temple

Established during 782-806, the main building of the Daifukukoji Temple is said to have been relocated to the current sight by Takauji Ashikaga (the founder and first shogun of the Ashikaga shogunate). The temple is a designated Important Cultural Property of Japan and holds many designated cultural properties of the town and the prefecture.

ADD/221 Iwanoue Shimoyama Kyotamba Town 622-0201



### Ibosuigu

According to tradition, water at this temple is said to eliminate warts.

ADD/Honjyo Kyotamba Town 629-1121



### Shitsumi Hachiman Shrine

The Shrine is said to be built back in Tenryaku era 947-957. The building was burned down a number of times during the battles, therefore the current shrine was built in 1796.

ADD/46 Shouwanoue Shitsumi Kyotamba Town 622-0332



### Shitsumi Hachiman Autumn Festival

This annual autumn festival is a parade of the wooden flute and Japanese drums, marching along a 400m stretch of hundreds of year old pine trees. This festival is a designated important intangible cultural property. It is held in October each year.



### Umedakasuga Shrine (Sarutahiko Shrine)

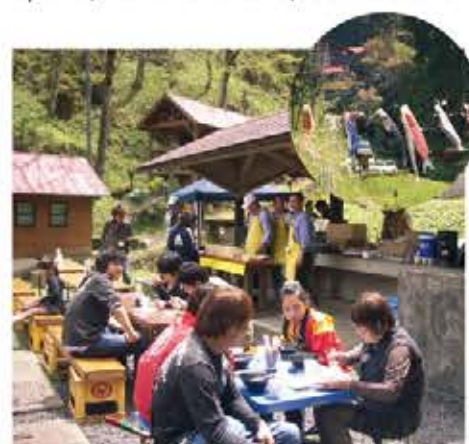
This shrine was designated as the cultural property of the prefecture in 1983, along with Sarutahiko Shrine.

ADD/2-3 Miyanoshita Mizuhara Kyotamba Town 622-0453



## Events : What's on in Kyotamba

Looking for something? Find, join, and enjoy in Kyotamba, our all year around events including music, sports, traditional arts, festivals and more.



### Shidushi Limestone Cave Park Festival

Shidushi Limestone Cave Park May 3・4th

Local hand-made festival during Golden Week in May. A variety of stalls are displayed and are creating a warm atmosphere.

TIME/9am-5pm; Apr-Nov open daily, Mar-Dec open Sat Sun only

ADMISSION/Adult:520 Child:300

ACCESS/ Kyoto Jukan Expressway Mizuho IC; 15 min drive

### Tamba Kids Festival

Tamba Sport Park May 5

There will be food and drink stalls of refreshments and fun activities for children and families. e.g. kingyo-sukui (gold fish fishing), rides, fire station/police corner and more.

TIME/10am-3pm ADMISSION/free

ACCESS/JR Sanin Main Line, Sonobe Sta; 20 min drive



### Katsuragi Shrine Autumn Festival

Katsuragi Shrine May/Oct Late

Large "Mikoshi" (portable shrine) is carried around the village, the festival is regarded as a wish for the productivity of grain and the peace of the village.

ADMISSION/free

ACCESS/JR Sanin Main Line, Sonobe Sta; 15 min drive OR JR Bus from Sonobe Sta; Tamba Mito Stop, 10 min walk



### Apare Tanbo

Tamba Sport Park May/Oct Late

Large art work in the middle of rice paddies next to Kyoto Tamba Sport Park, planting a variety of seedlings in order to create multi-coloured rice plant art. For harvesting season, it attracts over 100 visitors.

ADMISSION/free

ACCESS/at surrounding rice paddies of the sport park. JR Sanin Main Line, Sonobe Sta; 20 min drive



### Black Soybean Rock Festival in Kyotamba

Green Land Mizuho May Late

Cross between food and rock music, one of the live rock musician from the Kyoto city will be putting on his performance in the outdoor settings. There will be food and drink stalls.

TIME/10:30am- ADMISSION/free

ACCESS/JR Sanin Main Line, Sonobe Sta; 25 min drive



### Yasaka Shrine Onda Festival

Onagano May Last Sunday

Begain in 1970, 8 rice planting girls all dressed up in red and white kimono get together to dance to the traditional music and plant the seedlings.

TIME/10am-11am ADMISSION/free

ACCESS/JR Sanin Main Line, Shimoyama Sta; 10 min drive



### Kyotamba Summer Festival

Tamba "Markeds" Aug 5

Kyotamba Summer Festival is a combination of all summer vibrations starting with fireworks, illumination and Tanabata (the star festival - legend has it that there were two devoted lovers, Hikoboshi (Altair star) and Orihime (Vega star), who were separated by the Milky Way and they see each other only once a year on the day of Tanabata)

ADMISSION/free

ACCESS/Kyoto Jukan Expressway Tamba IC; a min drive



### Waon (Japanese sound) Festival

Aguri Park Wachi Sept Late

Local music festival held at Aguri Park Wachi, gathering many local artisans and musicians. Enjoy the food stalls and the local produce.

ADMISSION/free

ACCESS/ Kyoto Jukan Expressway Wachi IC; 15 min drive OR JR Sanin Main Line, Wachi Sta; a few min drive



### Mizuho Summer Evening Gathering

Hinokiyama Shopping St. Mid Aug

Cooling off the hot summer day, there will be live performance and events arranged by local people using Soba at this gathering.

ADMISSION/free

ACCESS/Kyoto Jukan Expressway Mizuho IC; a few min drive.



### Black Soybean Stalls on Streets

Everywhere in Kyotamba Oct Late

In October, it's the harvesting season for Black Soybeans, and many farmers producing the beans will be selling them on the side of the road in town where you can stop and purchase on the spot.



### Wachi Furusato (mother land) Festival

JR Wachi Sta Aug Late

Long-standing dance "Bunshichi Odori (The Japanese traditional folk dance)", attracting crowds of people that dances to the rhythm and sound. With its origins dating back to the mid Edo period, the Wachi Bunshichi Odori is a traditional folk dance danced to rhythm accompanied by the lead of the dancers.

ADMISSION/free

ACCESS/Kyoto Jukan Expressway, Wachi IC; 15 min drive OR JR Sanin Main Line, JR Wachi Sta; a min walk



### Kumano Shrine Dengaku

Kumano Shrine Oct Late

Historically, "Dengaku" established back in Heian period as fun and traditional experience before planting the seedlings, dance will turn in to a prayer of a good harvest.

ADMISSION/ free

ACCESS/JR Sanin Main Line, Wachi Sta; 20 min drive



### Kyotamba Food Festival

Tamba Sport Park Oct Late

One of the largest event in Town, drawing approx. 15,000 visitors each year, competitors of the local food and produce rushes for the grand prize. Food stalls and markets will be happening all day along.

TIME/10am-3pm

ADMISSION/free

ACCESS/JR Sanin Main Line, Sonobe Sta; 20 min drive

<http://fes.kyotamba.org>



### Kyoto Tamba Road Race

Tamba Sport Park Nov 3

Running either 3km, 5km, 10km or half a marathon, there will be many runners from families to semi-pros, encouraging others to run towards the goal in cool air of this season.

TIME/8:30am(Reception)-; 10:20am(start)-

ADMISSION/Adult:2,000- Child:1,500-



## Professional Skills & Works

Using the energy off the fascinating natural environment, these professionals are expressing their own fields through their professional skills.



**Story teller - Fumie Tani**  
[Ehon-chan]

Utilising the old Shitsumi Elementary School, Fumie has opened up a book store "Ehon-chan", specialising in picture books and providing space for children and mums.

**TIME**/Tues, Thurs, Fri, Sat, Sun 11:00-17:00

**ACCESS**/43 Ueno Shitsumi Kyotamba Town  
<http://www.ehonchan.net>

MAP  
B-4



**Carpenter - Daisuke / Aki Ueda**  
[Wooden Blocks and Furniture]

Using only pure materials and natural liquor, this furniture has been created for high demand for many years.

**ACCESS**/28-1 Nahata Shitsumi Kyotamba Town  
<http://www.tsumiki.net>

MAP  
B-4



**Sweets - Kaori Ishibashi**  
[bio Sweet's capocapo]

"We need to revisit the slow food, Japanese traditional food without losing the sensitivity of the goodness of these styles" so says Kaori. Alongside of the Yura River surrounded by nature, Capocapo produces organic cakes.

**TIME**/ Mon, Thurs, Fri, Sat, Sun 11:00-18:00 (Lunch 12:00-14:00)

**ACCESS**/16 Shiyogaki Sakahara Kyotamba Town  
<http://www.capocapo.com>

MAP  
C-3



**Farmer - Yoshitsugu Yamauchi**  
[Tamba Marron Farm]

One of the local produce is the Tamba marron. Since a teenager for the last 50 years, Yoshitsugu has been involved in the farming of this large and beautiful flavored Tamba marron.

**ACCESS**/89 Yamazoe Shijo Kyotamba Town  
<http://tamba-marron-farm.com>



**Carpenter - Tomokazu Furui**  
[Koubo "Tsukinowa"]

Tomokazu wanted to live close to nature. Having that as a base, after discovering the charm of wood, he decided to become a carpenter.

At the studio in Kyotamba, he produces wooden containers, plates and bowls.  
**ACCESS**/10-3 Nishitani Jise Kyotamba Town  
<http://www.tsukinowa-tomo.com>

MAP  
C-5



**Sake - Wataru Terai**  
[Sake Chourou]

Established in Meiji 36 (1903), Wataru has been putting all his effort into keeping the spirit of this brand. His aim is to produce a Sake the local people can be proud of by maintaining the high quality of ground water for producing.

**ACCESS**/5 Nowote Honjo Kyotamba Town  
<http://www.chourou.co.jp>

MAP  
C-3

## Traditional Arts

In Kyotamba, vibrant traditions and cultures are adding "colours" to the local area and to its history. It is very much stemming out of the abundant nature and environment, it's creations inspire a sense of wonder and appreciation for many historical arts and traditions.

**DATE**/performed once a month on the last Saturday from 1:30pm ~

**ACCESS**/Roadside Station "Nagomi", Traditional Art Centre, About 10 minutes drive from Kyoto Jukan Expressway

**ADD**/11 Mojiri Sakaharaue Kyotamba Town Funai-gun, Kyoto 629-1131



**Wachi Daiko Drum**

The highlight of this Wachi Daiko Drum is the strong Bachi (sticks) and its sound. It's origins dating back to Heian Period (986-1086), on his way to Giant subdue the Giant ogre of Mt. Oeyama, the warlord Miyamoto no Yoritomo took shelter from the rain at Fujinomori Shrine in Kyotamba Town to pray for his success in the battle. Originating from an episode of shuten-doji Ogre, a performance was offered by local villagers.



**Furusato Ningyo Exhibition**

This exhibition is on in early April. The traditional Japanese Dolls are to pray for young girl's health, growth and happiness. At the exhibition authentic mud dolls, and dolls with swords are also displayed.



**Obata Manzai**

A group of three comedians touring around back in Edo period was called "Obata Manzai". Their costumes and instruments were discovered in 1934, and is the beginning of the modern comedy.



**Wachi Ningyo Jyoruri**  
Puppet Show

The Wachi Ningyo Jyoruri, a Japanese traditional puppet theater, with its origins dating back to the late Edo period (1789-1853) is played out by the beautiful integrated 3 part performance of the tayu chanter, the shamisen player, and puppeteers. It is a designated Important Intangible, Folk Cultural Property of Kyoto.

**Wachi Bunshichi Odori**  
(The Japanese traditional folk dance)

The dance originating back to the mid Edo period, the Wachi Bunshichi Odori is a traditional folk dance danced to rhythm accompanied by the lead of the dancers.

**Tamba**  
**Yasaka Drum**

This Tamba Yasaka Daiko Drum, its origins dating back to the Edo period, was used to fight against illness. It's revival in 1971 by the locals, in recent years, it has been performed at Yasaka shrine Onda Festival by the end of May.





# Kyotamba Oishi-mon Dictionary : You can find real food in Kyotamba.

Kyotamba has been known as Kyoto's kitchen, the place to find delicious food and related items. The secret is within the town's climate.



## ▲ Dainagon Azuki beans

Dainagon Azuki beans are often used in high quality Japanese sweets. Japanese traditional sweets and sticky rice are two of the main dishes that uses Azuki beans.

## ▶ Tamba Kuro Edamame

Kuro Edamame beans are the black soybeans in the pod, and are boiled or steamed served with salt. October is the season. It's tasty! You won't be able to stop once you start.



## ◀ Tamba Black Soybeans

This is one of the best known black beans. It is a large bean and usually has a smooth surface.

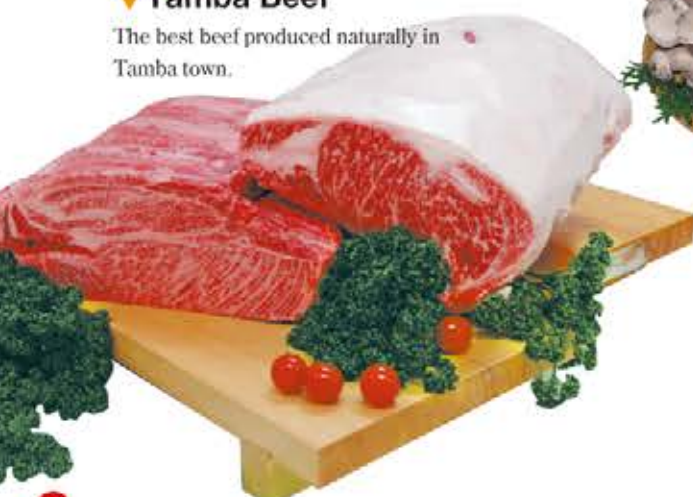


## ▲ The Tamba chestnut

The Tamba chestnut is one of the best Tamba brands: a real taste of what a chestnut is all about.

## ▼ Tamba Beef

The best beef produced naturally in Tamba town.



## ▶ Mizuna

Traditional Kyo-Yasai (vegetables of Kyoto) Mizuna: the crunchy component of the vegetable adds a texture to a dish.



## ▲ Ayu

Ayu at Wachi River is highly recognised and well known country wide. You can taste them in the local accommodations such as Ryokan.



## ◀ Hatake Shimeji

Hatake Shimeji is rather new hero of the mushroom. Full of vitamins and fiber, it does not have the typical bitter taste of mushrooms.



## ◀ Tamba Matsutake

The taste of Autumn: Tamba Matsutake (Mushroom). It's flavour is well known all around in Japan.



## ▶ Daikoku hon Shimeji

Daikoku hon Shimeji (mushroom) was named after "Daikoku" (the god of wealth as well as one of the Seven Lucky Gods "Fukujin") because of their round shape just like the tummy of the god.



## Locomoko

2013 Winner of Kyotamba Shokuno Saiten, "Locomoko" (Tamba beef stew)



## Botan-nabe

You can enjoy Botan-nabe (wild boar hot pot stew) at Ryokan and other accommodations in town.



## Tamba Wine · Wine House

Pick your own favorite wine and dinner either indoor or out on the open terrace looking over the vineyard.

OPEN/11am-3pm(LO:2:30pm,closed Thurs)  
ADD/83 Chiyohara Tomita Kyotamba Town



## Kurimushi Yokan (Traditional Japanese Azuki bean sweets)

Using Tamba Black beans, Azuki beans, and chestnut, this Yokan can be purchased at Roadside Station "Sarabiki".



## High quality Sake Chourou

The name originates from Chourougatake Mountain. Using the underground water and locally produced rice, you can visit the "Kura" (House, by appointments only).

ADD/5 Nowote Honjyo Kyotamba Town



This wine was the winner of a World Food contest, the Monde Selection. They run winery tour and you can see their vineyard to vinification facility. You can also enjoy shopping, wine tasting and dining at the restaurant.

OPEN/10am-5pm (closed Thurs)

For more info

TEL.0771-89-1717 www.kyotamba.org (Kyotamba Town Tourist Association)

TEL.0771-82-3809 www.town.kyotamba.kyoto.jp (Kyotamba Town)

※both sites, in Japanese only



# Nordic WALK in Wachi area & Cycling Course

4km  
course

If you are looking for some valuable experience in Kyoto's country side, you've come to the right spot. In Kyotamba, you'll be exposed to the unspoiled landscapes and gaze into the wisdom of being in nature.



## What is Nordic Walk?

Nordick Walk is a total body version of walking that uses "walking poles" which eases the stress on foot. The walking truck is easy enough for all age groups, and rental bicycles are also available at the Roadside Station "Nagomi".  
**OPEN/** 8:30am~6:30pm  
**ACCESS/** About 5 min drive from Kyoto Jukan Expressway Wachi IC



# Hockey Camp in Kyotamba

## Kyoto training center

- Training Room
  - Restaurant
  - In-service Training Room (maximum capacity of 100)
  - Athletic Stadium
  - Gymnasium
  - Fully-equipped multipurpose Ground
  - Cross-country Course
- Included in this is top quality food meeting athlete's requirements



## Greenland mizuho Hockey ground

- The surrounding equipment
- Ground with roof (in case of a bad weather)
  - Meeting room (for team and staff)
  - Restaurant
  - Gymnasium and multipurpose ground fully equipped.
  - Pool with a roof (200meters away from the hockey ground)
  - Farm (agricultural experience)
  - Accommodations(Hot shower is available)
  - Selected local products are sold at the Roadside station.



## Map & Information

